

Inductive sensor

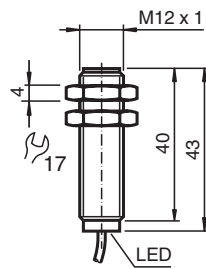
NBB2-12GM40-Z0-5M-Y87672



- 2 mm flush
- 2-wire DC



Dimensions



Technical Data

General specifications			
Rated operating distance	s_n		2 mm
Installation			flush
Output polarity			DC
Assured operating distance	s_a		0 ... 1.62 mm
Actual operating distance	s_r		1.8 ... 2.2 mm typ.
Reduction factor r_{Al}			0.18
Reduction factor r_{Cu}			0.12
Reduction factor r_{304}			0.67
Output type			2-wire
Nominal ratings			
Operating voltage	U_B		5 ... 60 V
Switching frequency	f		0 ... 1000 Hz
Hysteresis	H		1 ... 10 typ. 5 %
Reverse polarity protection			reverse polarity tolerant
Short-circuit protection			pulsing
Voltage drop	U_d		≤ 5 V

Release date: 2022-05-23 Date of issue: 2022-05-23 Filename: 087672_eng.pdf

Refer to "General Notes Relating to Pepperl+Fuchs Product Information".

Pepperl+Fuchs Group
www.pepperl-fuchs.com

USA: +1 330 486 0001
fa-info@us.pepperl-fuchs.com

Germany: +49 621 776 1111
fa-info@de.pepperl-fuchs.com

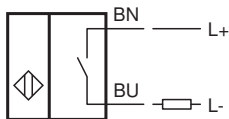
Singapore: +65 6779 9091
fa-info@sg.pepperl-fuchs.com

PF PEPPERL+FUCHS

Technical Data

Operating current	I_L	2 ... 100 mA
Lowest operating current	I_m	2 mA
Off-state current	I_r	0 ... 0.5 mA typ.
Switching state indicator		all direction LED, yellow
Functional safety related parameters		
MTTF _d		2250 a
Mission Time (T _M)		20 a
Diagnostic Coverage (DC)		0 %
Compliance with standards and directives		
Standard conformity		
Standards		EN 60947-5-2:2007 IEC 60947-5-2:2007
Approvals and certificates		
UL approval		cULus Listed, General Purpose
CSA approval		cCSAus Listed, General Purpose
CCC approval		Certified by China Compulsory Certification (CCC)
Ambient conditions		
Ambient temperature		-25 ... 70 °C (-13 ... 158 °F)
Mechanical specifications		
Connection type		cable PVC , 5 m
Core cross section		0.14 mm ²
Housing material		brass, nickel-plated
Sensing face		PBT
Degree of protection		IP67

Connection



Accessories

	BF 12	Mounting flange, 12 mm
---	--------------	------------------------